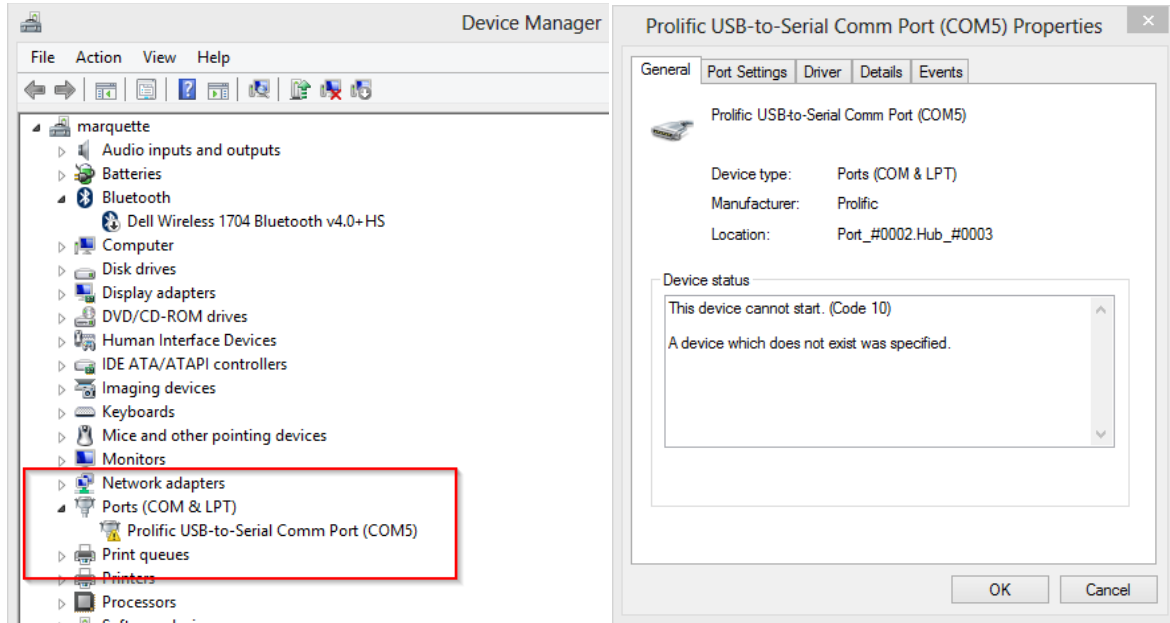


PRG 10 - Prolific driver error on Windows 10

After the driver setup on windows 10, Device Manager gives you an error (as you can see in the image below).



To solve this issue you have to download the right driver for the device.

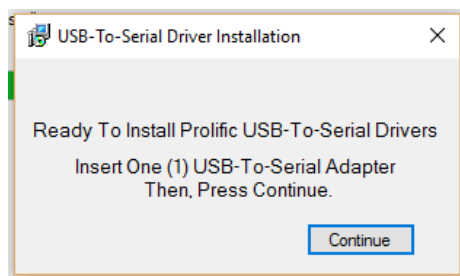
You can download from the links below:

For 64 bit systems: http://www.ifamilysoftware.com/Drivers/PL2303_64bit_Installer.exe

For 32 bit systems: http://www.ifamilysoftware.com/Drivers/PL-2303_Driver_Installer.exe

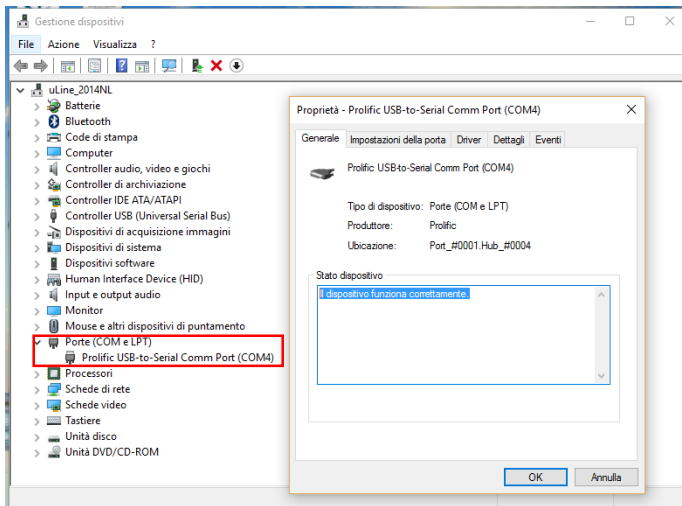
After downloading you have to disconnect your PRG 10 from the USB and launch the setup (during setup may be request to download .NET frameworks).

Follow the instructions and plug in the USB PRG10 when requested.



At the end Reboot is required.

After reboot windows in Device Manager window you will find the working driver.



WARNING: Now pay attention not to update the driver by Windows Update because newest driver versions are not working.